

MEDICAL EDUCATION LIBRARY

Finding the Best Approach to Autoimmune Connective Tissue Disease Diagnosis**Publish date:** August 11, 2014

This educational supplement to Rheumatology News was sponsored by Exagen Diagnostics, Inc.

Jenny Cabas-Vargas, MD

Rheumatologist

Institute for Rheumatic and Autoimmune Diseases

Overlook Medical Center

Summit, New Jersey

Puja Chitkara, MD

Rheumatologist

Center for Arthritis and Rheumatologic Excellence (CARE)

San Diego, California

Stratos Christianakis, MD

Rheumatologist

Assistant Professor of Clinical Medicine

Keck School of Medicine of USC

Los Angeles, California

Chaim Putterman, MD

Professor of Medicine

(Rheumatology) and Microbiology & Immunology

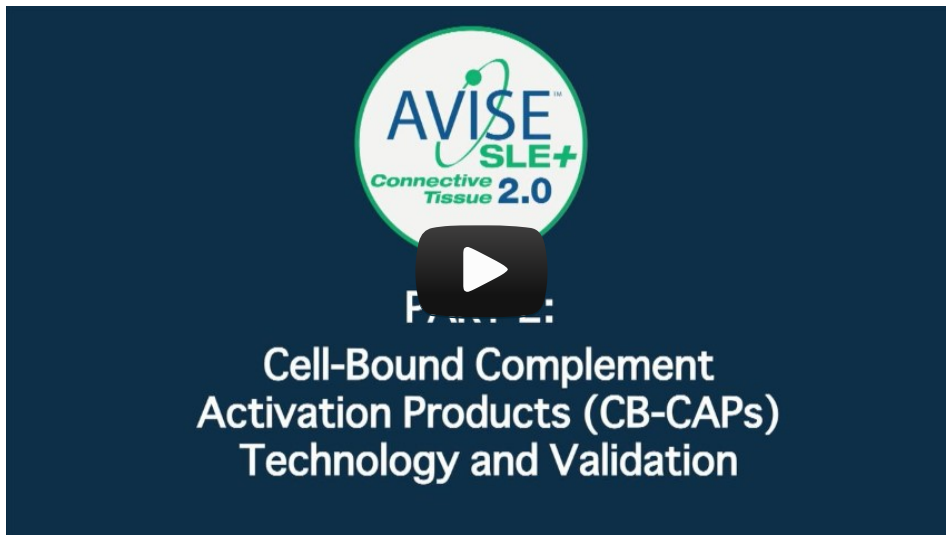
Chief, Division of Rheumatology

Albert Einstein College of Medicine

Bronx, New York



Part 1



Part 2



Part 3




Part 4



PART 5: Dr. Chitkara
Case Study - SLE with Potential Development of Mixed Connective Tissue Disease

Part 5



PART 6: Dr. Cabas-Vargas
Case Study - Sjögren's Syndrome with Fibromyalgia

Part 6



PART 7: Dr. Christianakis

Case Study - Undifferentiated CTD
and Hashimoto's

Part 7



PART 8: Dr. Putterman

Case Study - Rheumatoid Arthritis and SLE

Part 8

These videos are based on current knowledge and are for educational purposes only. Patients should consult their healthcare providers regarding specific recommendations for diagnosis and treatment.

Copyright © 2017 Frontline Medical Communications Inc., Parsippany, NJ, USA. All rights reserved. Unauthorized use prohibited. The information provided is for educational purposes only. Use of this Web site is subject to the [medical disclaimer](#) and [privacy policy](#).

